



Invasive Species Council Update & 2008 -2012 Plan

MISC Sept 2008

**Chris Dionigi
National Invasive Species Council**



Invasive species can be plants, animals, or microorganisms.

- 1. species that are not native to the ecosystem under consideration.**
- 2. whose introduction causes or is likely to cause economic or environmental harm or harm to human health.**

(E.O. 13112)





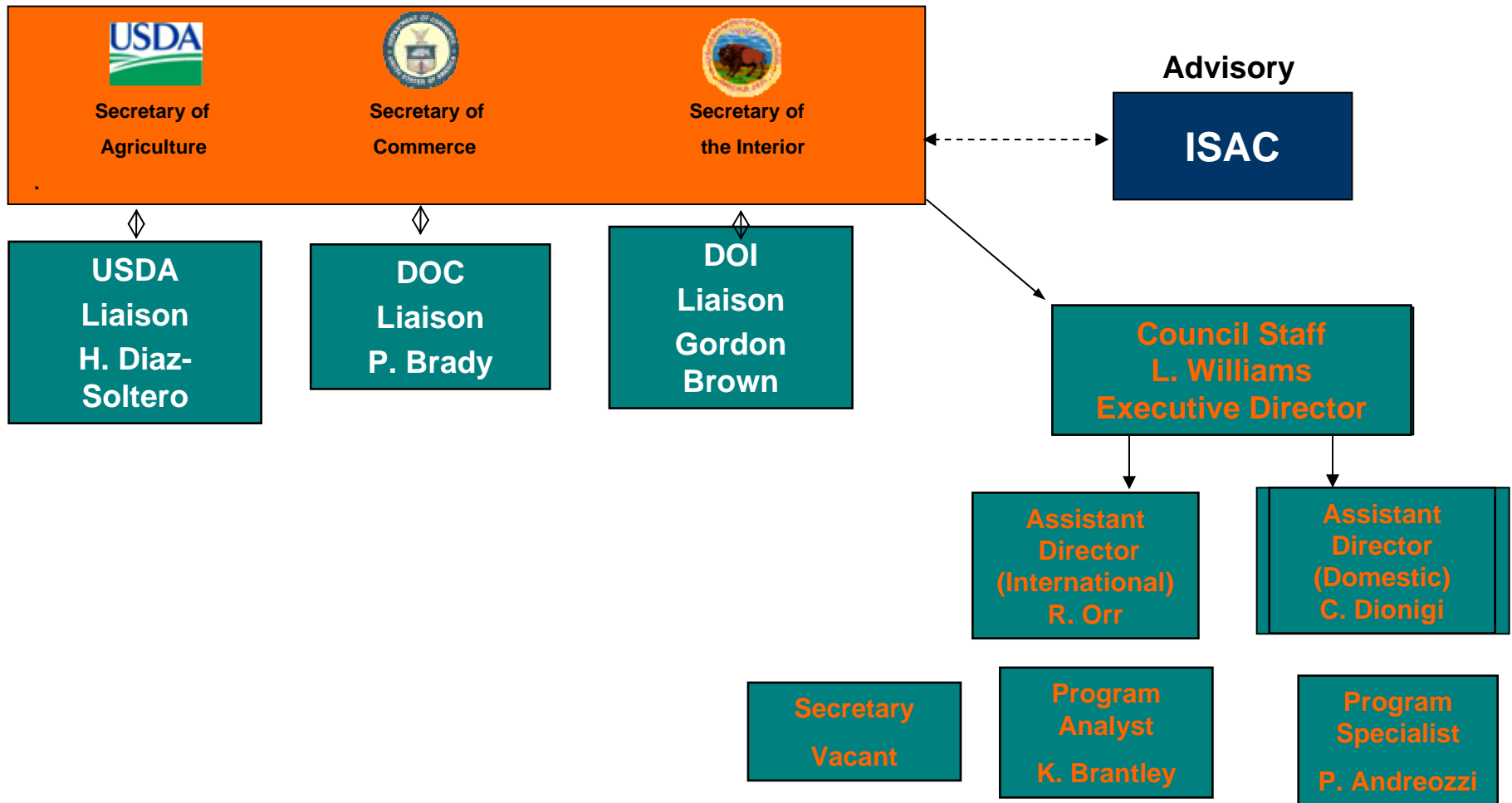
Invasive Species Definition Clarification and Guidance White Paper.

**Definitions Subcommittee of
the Invasive Species Advisory
Committee**

Approved April 27, 2006



NISC Office Outline





NISC Staff has an extensive coordination responsibility.

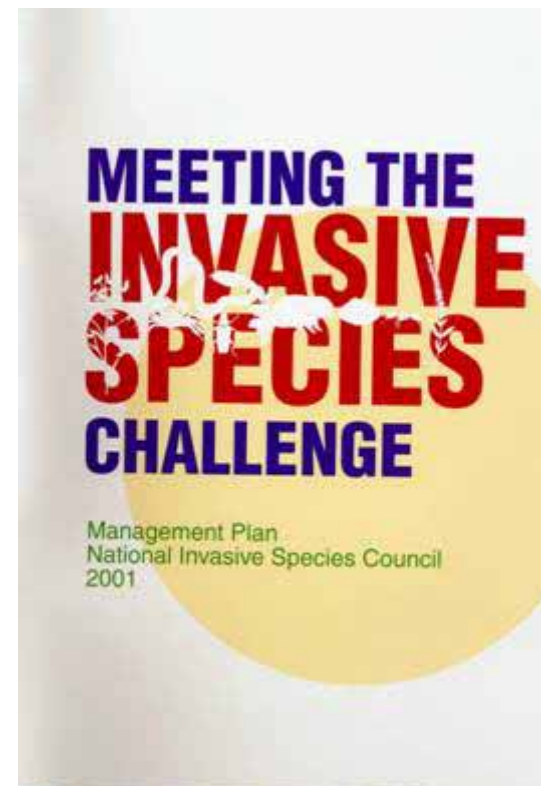
35 Federal agencies & **40** Federal laws have some role/impact

About **390** Federal/State/private programs, **170** groups & **250** organizations

NISC Staff estimates Federal Invasive Species Spending at ca. **\$1.3 Billion/year**.



NISC's Primary Coordination Tools = National Management Plans



2001 Plan 170 identifiable actions



**2008- 2012
Plan Revision Completed August 1, 2008.**

**We have received 46 sets of
comments from 60 individuals --
For a total of about 145 pages of comments.**



**2008 – 2012 National Invasive
Species Management Plan**



STRATEGIC GOALS

(Prevention, EDRR, CM, Restoration, and Organizational collaboration)

OBJECTIVES (specific)

Implementation Tasks (5- Year)

Performance Elements (measures)

Leads & Participants



STRATEGIC GOAL (EDRR#2) Develop and enhance the capacity to identify report and effectively respond to newly discovered/localized invasive species

OBJECTIVE #1 : ENHANCE CURRENT MONITORING EFFORTS FOR EARLY DETECTION.

Implementation Task Enhance plant and animal pathogen detection methods.

Performance Elements Develop enhanced identification methods and supportive technologies for at least one group of pathogens.

Leads & Participants *ARS; USGS; DHS; HHS; DOD; EPA; APHIS; CSREES; FS.*



2008 -2012 Plan has:

- 5 Strategic Goals**
- 87 Performance Elements**
- 38 Agencies & Programs involved**
- 138 Lead roles identified**
- 407 Participant roles identified**
- 209 Actions called for**

Commerce Leads or Participates in 30 Performance Elements.

Interior Leads or Participates 133 Performance Elements.

USDA Leads or Participates 206 Performance Elements.

NISC Staff Leads or Participates 53 Performance Elements.



PREVENTION: Prevent the introduction of invasive species.

Screen intentionally introduced species.

Address high risk pathways of introduction.

Improve standards & guidelines.



EARLY DETECTION & RAPID RESPONSE:

Find and stop new invasive species.

Enhance monitoring.

Make taxonomic information more available.

Develop EDRR tools.

Enhance planning.

Fund rapid response efforts.



CONTROL & MANAGEMENT:

Stop the spread and minimize impacts.

Evaluate capabilities & identify gaps.

Reduce spread & harm.

Develop workforce competencies.

Enhance ecosystem recovery.



RESTORATION:

Restore native species and habitats;
rehabilitate high-value ecosystems and processes.

Include invasive species concerns in restoration projects.

Restore selected high-value areas.

Restore habitats at multiple scales.



ORGANIZATIONAL COLLABORATION:

Maximize effectiveness & collaboration on invasive species issues.

Improve understanding of legal and regulatory tools.

Expand coordination.

Improve federal research.

Enhance policy & regulatory processes.
Strengthen coordination.

Enhance outreach

Enhance data standards and quality.



**Invasive Plant Research
and
Partnerships with
Ornamental Horticulture
and
Natural Resource Management
Workshop Report**

Sponsored by:
U. S. National Arboretum
Beltsville Agricultural Research Center
The Nature Conservancy
The American Nursery and Landscape
Association
National Invasive Species Council

June 2008



General Consensus Points:

The importance of coordination and avoiding the introduction and spread of invasive plants.

Partnerships and communication among industry representatives, natural resource managers, and research administrators is critical.



Terminology can contribute to confusion.

Stakeholders, i.e., the horticulture industry and conservation groups, have not agreed upon standards (i.e., adequate levels of expression) for attributes such as “sterility,” and “non-invasiveness” in plant selections and cultivars. However, the relative effectiveness of the underlying genetic and/or physiological mechanisms that produce sterility in a cultivar provides a level of assurance of that cultivar’s anticipated performance in the field.

Decisions concerning codes of conduct, regulations, and planting recommendations should be based on “sound science.”



Systematics is a critical limiting factor.

A critical limiting factor is shared access to reliable information.



Solutions to complex problems requires sustained efforts at levels that are commensurate with the value of the resources at stake.