

Washington D.C.

Title: Invasive Plant Removal Outings at Fort Dupont Park, SE, Washington, D.C.

Leader/s or Sponsored by: Anacostia Watershed Society and the National Park Service.

Dates:

- 4/18/2010
- 4/29/2010
- 5/13/2010
- 5/21/2010
- 5/28/2010

Time/s:

- 4/18/2010 (10:00 am-12:00 pm)
- 4/29/2010 (9:30 am-12:00pm)
- 5/13/2010 (8:00 am-10:30 am)
- 5/21/2010 (9:30 am-12:00pm)
- 5/28/2010 (9:30 am-12:00pm)

Trip description: the park comprises almost the entire area of **Fort Dupont subwatershed** which is approximately 460 acres; about 11% is impervious. It is the least populated subwatershed and the one with the highest level of forest cover in the Anacostia watershed, with a forest cover of 63.9%; the subwatershed possesses substantial areas of mature forests of 65 years or older. The park and the entire subwatershed are located entirely within the Coastal Plain physiographic province, although the park topography is quite hilly which explains why a military fort was built during the Civil War era.

Roughly more than 50 acres are infested with invasive plants. However, the magnificent mature forests of the park are, at many sites, almost free of invasive plants; in addition, there is a rather low deer population which means that the park has some healthy and nice-looking woods! In these sites the forest understory shelters native shrubs like mountain laurels (*Kalmia latifolia*) which are abundant on slopes. The Cranefly Orchid (*Tipularia discolor*) is another remarkable native species. At least two interesting native parasitic species occur in the park, Beechdrops (*Epifagus virginiana*) and Indian Pipe (*Monotropa uniflora*), the presence of the latter by itself shows how rich the woods are. Interestingly, the park has a healthy Wild turkey (*Meleagris gallopavo*) population in the middle of the city!

Exotic Removal Workday description: AWS invasive removals usually employ hand-pulling, cutting (with hand pruners and cutting saws) and pulling using tools i.e. pitchforks. We will focus on Garlic Mustard in springtime; however, we will also remove: Japanese Stilt Grass,

Mile-a-minute, Multiflora Rose, Chinese Wisteria, English Ivy among others. Our invasive plant removal outings have an educative approach; volunteers usually have an introductory talk by one of the park rangers about the history of the park and other interesting facts. AWS staff will talk about some aspects of the natural history of the park and will sure point out interesting native plants and animals.

Directions: We will meet up at the park's Activity Center which is located on Fort Dupont Drive, SE off Randle Circle, SE. Fort Dupont Park is located in Southeast Washington, D.C., east of the Anacostia River. It is not near Dupont Circle. It is bounded by Minnesota Avenue to the west; Ely and Ridge Roads to the north; Alabama Avenue to the east; and Massachusetts Avenue to the south.

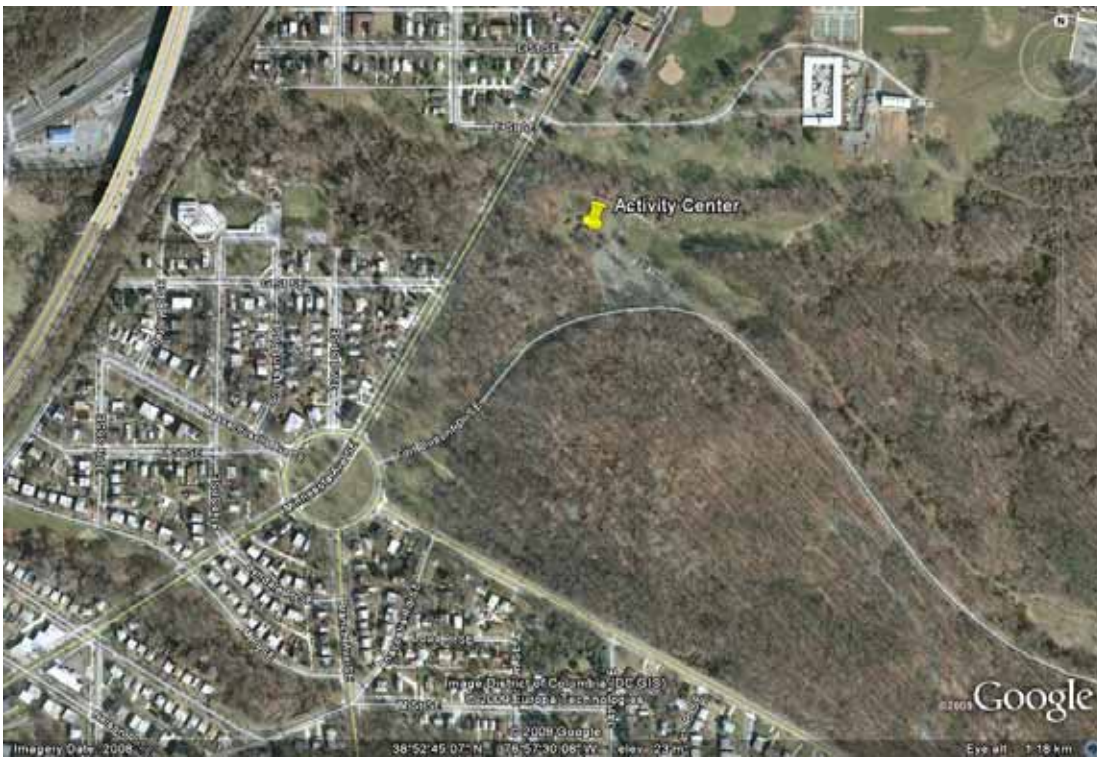


Figure 1. Photo of the SW area of the park showing Randle Circle, SE and the park's Activity Center on Ft. Dupont Drive, SE.

- **From Northwest DC or Capitol Hill:** Take Pennsylvania Avenue east over the Anacostia and take a left at Minnesota Avenue (maybe half a mile). Take Minnesota to Randle Circle (less than a mile) and take a right into the circle. You will see a National Park Service sign reading “Fort Dupont Park” and a small picnic area; take a right onto Fort Dupont Drive. The parking lot/Nature Center are a short way in on the left.

From 395: Take the Southeast/Southwest Freeway towards 295; exit Pennsylvania Avenue Westbound. Cross over the Anacostia and take a left at Minnesota (maybe half a mile). Take Minnesota to Randle Circle (less than a mile) and take a right into the circle. You will see a National Park Service sign reading “Fort Dupont Park” and a small picnic area; take a right onto Fort Dupont Drive. The parking lot/Nature Center are a short way in on the left.

- **From 295 Northbound: Exit Pennsylvania Avenue Westbound and take a left at Minnesota (maybe half a mile). Take Minnesota to Randle Circle (less than a mile) and take a right into the circle. You will see a National Park Service sign reading “Fort Dupont Park” and a small picnic area; take a right onto Fort Dupont Drive. The parking lot/Nature Center are a short way in on the left.**
- **From Points East: Take Pennsylvania Ave into the city. Take a right on Minnesota Ave. Take Minnesota to Randle Circle (less than a mile) and take a right into the circle. You will see a National Park Service sign reading “Fort Dupont Park” and a small picnic area; take a right onto Fort Dupont Drive. The parking lot/Nature Center are a short way in on the left.**

Carpool Info: N/A

Bring: We strongly recommend long pants, long-sleeved shirts, socks, and closed-toe shoes (hiking or waterproof). This helps minimize skin exposure to poison ivy and ticks, which are found in the park (If clothing can also be light-colored, it’ll be easier to spot ticks.). We recommend bringing along a repellent designed to repel both deer ticks and mosquitoes and a water bottle. AWS will provide gloves, tools and other supplies to get the job done. Bring your bird and wildflower field guides and enjoy one of the best urban greenspaces in the nation!

Note: People highly allergic to poison ivy should think carefully before entering any wooded or weedy area in the Mid-Atlantic. Poison ivy is commonly found in the park.

Contact: info@anacostiaws.org/ phone: (301)-699-6204

Warren County, VA

**Non-native Invasive Plant Removal
James Åkerson, Volunteer Leader.**

**Appalachian Trail trailhead at VA-638 (Fiery Run Road) near Linden, VA
April 17, 2010 and
April 24, 2010**

Join other volunteers to remove non-native invasive plants from along the world famous Appalachian Trail and protect bird habitat. This spring event focuses on early non-natives to improve bird habitat of the Upper Blue Ridge Important Bird Area, a designation of the National Audubon Society of Virginia. Targeted plants include garlic mustard which is known to be lethal to West Virginia white butterfly. Other projects will follow during the summer and fall to control other invasive plant targets. Wear long sleeves, long pants, shoes and socks when working in the forest. Bring water and your lunch. Work gloves will be provided at these events. Children should be at least 8 years old and in the close oversight of their parents or group leaders. People interested in continuing this effort throughout the year can contact the Volunteer Leader to adopt their very own area along the Trail to monitor, map and manage. Directions to the site-event will be provided by the Volunteer Leader.

Contact: James Åkerson, 540-999-3500, ext. 3496; james_akerson@nps.gov

Anne Arundel County

Non-native Invasive Plant Removal

Jug Bay Wetlands Sanctuary, Anne Arundel County

Spring Stewardship Day

Leaders: Lindsay Hollister and Elaine Friebele

Saturday, March 27; 10:00 am – 3:00 pm

Jug Bay Wetlands Sanctuary consists of over 1500 acres of wetlands, upland forests, meadows, and streams.

Stewardship means taking care of the land we all share. Join us to pick up trash that has floated into the marsh, pull invasive weeds, and maintain our native plant gardens. Please dress in work clothes (long sleeves and long pants), including boots or shoes that can get wet, and bring work gloves, a bag lunch, a change of clothes and a towel. Children should be at least 6 years old. Scout troops and community groups are encouraged to participate. Sign up for am, pm, or both.

Those interested in volunteering should call the Sanctuary (410-741-9330) or e-mail lindsay@jugbay.org.

Directions: Call JBWS 410-741-9330 or www.jugbay.org

Join our team to remove the non-native invasive plants from our forests and nip these NIPs in the bud before they spread and threaten the special habitats and rare plants found on the Sanctuary. Those interested in continuing this effort throughout the year can adopt their very own plot to monitor, map and manage the invasives.

Contact: Lindsey 410-741-9330, rpholl27@aacounty.org

Elaine Friebele

Education Coordinator

Jug Bay Wetlands Sanctuary

1361 Wrighton Rd.

Lothian, MD 20711

410 741-9330

Baltimore, Baltimore County

Invasive Vine Cutting at Prettyboy Reservoir and other Sierra Club sponsored invasive plant control events

Dates: Ongoing. Contact Mary at 443-386-0862 (cell), 410-239-4590 (home), or XxDiTz4LyFxX@aol.com.

For those who love hiking and animal-watching, Prettyboy Reservoir provides habitat for a variety of forest wildlife species, including white-tailed deer, wild turkey, rabbit, squirrel, and songbirds.

Meet for a couple hours of cutting invasive vines along the CCC fireroads at Prettyboy Reservoir. Meet at the parking lot on Tracey Store Rd. Reach Tracey Store Rd. by getting off I-83 north at the Mt. Carmel Rd. exit and heading west. Turn right on Pretty Boy Dam Rd. Turn left on Tracey Store Rd. After passing a Prettyboy Reservoir sign and a couple fireroads on the right and crossing a creek, park in the dirt parking lot on the right side of the road. Clippers, loppers, hand saws, and gloves will be available, or you may bring your own.

If you need additional information, contact Mary at 443-386-0862 (cell), 410-239-4590 (home), or XxDiTz4LyFxFX@aol.com.

Cromwell Valley Park

invasive plant removals in the park.

Habitat Restoration Team

Carl Koprowicz, Chair

2nd Saturday of each month 9-12. Rain date is the following day, at the same time.

Cromwell Valley Park is a wonderful rural park just outside the Beltway on Cromwell Bridge Road. The areas we have worked on in recent years, Beehive Woods and Dogwood Hill are looking much better, free of major invasives, with new trees and shrubs gaining a foothold. A new project last year was the installation of a deer exclusion fence demonstration to show the effects of excessive deer browsing in the forest.

Call 410-887-2503 Mon–Fri 9-2 for information about invasive plant removals in the park. You may also call to volunteer to participate in trail maintenance outings at check cvpark@bcpl.netthe park. Check out the park's varied activities.

Work parties for removal of invasives and planting of natives are held at Cromwell Valley Park on the 2nd Saturday of each month 9-12. Rain date is the following day, at the same time. Tools and refreshments are provided-all you need bring is suitable protective clothing.

Our Habitat Restoration Team has a tough ongoing assignment to eliminate non-native invasives from this scenic park, and we need all the help we can get. We have tackled multiflora rose, Japanese barberry, kudzu, garlic mustard, mile a minute, porcelain berry, oriental bittersweet and many others. There is still lots to do.

For information contact Carl Koprowicz at birders1@netzero.com

The park office is at 410-887-2503. info@cromwellvalleypark.org
or check out the park's website at <http://www.cromwellvalleypark.org>

Volunteers are placed on an email notify list.

Gunpowder Valley Conservancy:

Invasive Plant control events

Leader: Peggy Perry

Dates: see our calendar of events on our website at

www.gunpowderfalls.org<<http://www.gunpowderfalls.org>>

Tree Maintenance Volunteers Needed! The Gunpowder Valley Conservancy (GVC) is seeking volunteers, ages 12 and up, to adopt a tree planting site or be a helper on tree maintenance days coming up this spring, (see our calendar of events on our website at www.gunpowderfalls.org<<http://www.gunpowderfalls.org>>). You can help to maintain some of our 4,000 trees planted in the last 2 years. Invasive plants must be removed surrounding the trees, stakes and shelters must be secured, dead trees need to be marked, and watering may need to be done.

If you are interested in being a tree steward, contact Peggy Perry, Program Director for the GVC, at 410-668-0118 or

pperry@gunpowderfalls.org<<mailto:pperry@gunpowderfalls.org>>.

Title: Herring Run Watershed, Baltimore City

Leader/s or Sponsored by: Herring Run Watershed Association

Date/s: Ongoing

Time/s:

Trip description: working in city parks removing multi-flora rose, honeysuckle, English ivy, Japanese knotweed, Oriental bittersweet & more!

Exotic Removal Workday description: regular weed pull parties using shears, loppers, pick mattocks, and good 'ole muscles

Directions: Parks throughout Herring Run watershed. See calendar at www.herringrun.org for directions to specific events

Carpool Info: N/A

Bring: water, durable clothes w/long sleeves, boots, & sunscreen. We'll provide gloves & tools.

Note: (anything special that attendees should be aware of)

Contact: Ashley Traut, Community Outreach Manager, 410-254-1577 ext 103,

atraut@herringrun.org

Jones Falls Watershed

Meadowood Park, Druid Hill Park, Stony Run Park, Western Run Park and Wyman Park

Jones Falls Watershed Association

Dates: Call Nicole at JFWA for more information: 410-366-3036 or email nangeli@jonesfalls.org

Saturday, March 6

9:00am

Stream Waders Training: sponsored by MD DNR

Saturday, March 13

9:00am

Second Saturday Project

Saturday, April 3

9:00am

Tree Planting or site preparation

Saturday, April 10

9:00am

Second Saturday Project: Project Clean Stream

Saturday, April 17

9:00am

Tree Planting or site preparation

Thursday, April 22

All day

Earth Day

Saturday, April 24

9:00am

Tree Planting or site preparation

Saturday, May 1

9:00am

Tree Planting or site preparation

Saturday, May 8

9:00am

Second Saturday Project

Saturday, June 12, 2010

9:00am

Second Saturday Project

Description Join the JFWA for a family friend restoration project in a city or county park. Call the JFWA for more info: 410-366-3036

Saturday, July 10, 2010

9:00am

Second Saturday Project

Saturday, August 14, 2010

9:00am

Second Saturday Project

Saturday, September 11, 2010

9:00am

Second Saturday Project

Saturday, October 9, 2010

9:00am

Second Saturday Project

Saturday, November 13, 2010

9:00am

Second Saturday Project

Saturday, December 11, 2010

9:00am

Second Saturday Project

Check online calendar to confirm dates . Projects (not just invasive) 2nd Saturday each month 410-366-3036, www.jonesfalls.org or email Nicole Angeli, Volunteer MD Coordinator nangeli@jonesfalls.org or sgreene@jonesfalls.org. Join them for invasive plant removals at Meadowood Park just outside the Baltimore Beltway on Falls Road at Stony Run Park

Baltimore County and Howard County

**11th Annual Garlic Mustard Challenge, Patapsco State Park.
Friends of Patapsco Valley & Heritage Greenway, Inc.**

Sunday, May 2, 2010 (rain or shine)

TIME: 1-4:30 pm (volunteers arrive at 12:30 pm)

**WHERE: Patapsco State Park, Avalon Area, Pavilion 104
(5120 South Street, Halethorpe, MD 21227, off US Route 1)**

This is an annual event involving poster contest, weed pulling contest and chef contest. Registration required. Email patapscofriend@gmail.com. [patapscofriend@gmail.com](tel:410-480-0824) 410-480-0824

Garlic Mustard Challenge -(popular annual family-oriented event. Join the challenge with hundreds of other volunteers removing the invasive garlic mustard plant from the park. After two hours of pulling, enjoy live music, old fashioned picnic games, environmental displays. Prizes for all volunteers. Taste testing of garlic mustard side dishes by amateur chefs and view posters created by local area school-age children.

NOTE:

Additional PHG-sponsored volunteer event dates and locations may be scheduled depending on group requests, number of available volunteers and compatible dates and times. Call 410-480-0824 day of event to make sure event has not been cancelled.

For more information, contact Betsy McMillion, P. O. Box 96, Ellicott City, MD 21041 or email patapscofriend@gmail.com.

Patapsco Valley State Park

Friends of Patapsco Valley State Park

Patapsco State Park – <http://www.dnr.state.md.us/publiclands/central/patapscovolunteer.html>

Dates: Ongoing. Contact Jim Palmer to confirm date/time via email at J.G.Palmer@jhuapl.edu or at 410-948-4796

Please join the Friends of Patapsco Valley State Park at the Avalon area to eradicate invasive vines.

This is the worst place in the park for non-native vines where they have killed or broken many trees in that area, so we need lot's of help. Wear long clothes and bring gloves as there is some poison ivy. If you have them, bring hand pruners and loppers (the 2 handed cutters for larger vines). We will have a few extra tools if you need to borrow some. See our web site for updates at <http://www.fpvsp.org/>

Meet at the Avalon contact station.

From I -95 take I-195 east to Rt. 1 toward Elkridge. Turn right immediately on South St. Park entrance is on the left. Proceed 1/2 mile to the contact station.

Calvert County

American Chestnut Land Trust Port Republic, Calvert County, MD

Join us for our extensive Non-Native Invasive Plant Removal program in one of the last pristine watersheds on the Western Shore of the Chesapeake Bay.

Liz Stoffel, Land Manager

- o Every Wednesday: 10am – 12pm (October-April) and 9am-11am (May-September)**
- o Saturdays: March 27, April 17, May 22, June 19, July 24, Sept. 18, Oct. 30; 9am- noon**
- o Call for more dates**

Work as a team or individually; includes training, tools, water, and gloves.

For more information, weather cancellations or directions contact Liz Stoffel, Land Manager at 410-414-3400 or land@acltweb.org

There will be a full invasive training program August 14, but it is not necessary to participate on the workdays.

Hellen Creek Forest and Wildlife Preserve, Lusby, MD Native Plant and Invasive Removal Day Leader: Bob Boxwell

Event: Volunter Spring Cleanup Workday at Hellen Creek

Time: Sunday April 11, 2010 from 1 p.m. to 3 p.m.

Location: Hellen Creek Forest and Wildlife Preserve at 11785 Clifton Drive Lusby MD 20657

Description: Join us for a quick tour of the preserve before we get down to the ongoing work of invasive removal and habitat restoration. Hellen Creek Forest and Wildlife Preserve is 50

acres of stream and ravine along Hellen Creek. We have over 25 species of trees including hemlocks and are adjacent to TNC's Hemlock Preserve. We will have gloves and tools but wear sturdy clothes and shoes.

We will be working on invasive plant removal and native wildflower plantings. Learn how you can improve your own backyard to make it friendlier to the environment and take a native plant home for your garden. The Hellen Creek Forest and Wildlife Preserve is located off Clifton Drive in Lusby. Take Coster Road less than 1 mile to Clifton Drive on the right. Follow this to the driveway on the left with the number 11875 posted. Follow to the end where you will see our sign. We will provide gloves, tools, and refreshments.

Contact: Bob Boxwell 410-610-5124 bobboxwell@hotmail.com

Call or e-mail to find out more dates. For more info, or to receive updates about workdays email or call Bob Boxwell, Executive Director, Cove Point Natural Heritage Trust, 11785 Clifton Drive,

Caroline County

Adkins Arboretum

Dates: Ongoing. Contact Sue Wyndham swyndham@adkinsarboretum.org T: 410-634-2847 (x24) for late Spring , summer, or Fall.

Adkins Arboretum trains volunteers to assist the staff in the removal of invasive non-natives on the Arboretum's 400-acre site. Workdays are flexible. For more information contact Eleanor Altman at ealtman@adkinsarboretum.org For workdays starting in May , contact Sue Wyndham Land Stewardship Coordinator at 410 634-2847, ext. 24 in May. Visit www.adkinsarboretum.org for directions and more information.

Gardeners often unknowingly harbor some serious invasive plants in their backyards, or maybe they know but aren't sure what to replace them with. Participants learn about how using native plants to replace invasive plants can offer benefits from attracting more butterflies and birds to reducing the spread of invaders in their neighborhood. Participants will learn how gardens can reflect their native landscapes instead as well as being ornamental.

Charles County

Chapman Forest and Ruth Swann Park, Charles county

Participating organizations include Maryland Native Plant Society, Sierra Club and Chapman Forest Foundation.
Dates: First Sundays and following Saturday, monthly
Time: 10 a.m. – 4 p.m.

There are about 3,000 native plant species in Maryland, with 800 at Chapman Forest and contiguous Swann Park, 49 of which are endangered.

Remove invasive non-natives from the 200-acre Swann Park and 800-acre portion of Chapman Forest designated Chapman State Park. There will be time for plant identification and a beautiful beach lunch.

There are general methods and species-specific methods, such as best season for species, wet soil condition for pulling, handouts, extent of area of natives seen rescued, delayed gratification, targeted use of herbicides, and matching funds for staff to do what volunteers find hard to do.

Non-native invasive plant removal will reach maintenance phase following a major work effort at each site in the Mid-Atlantic region and around the world for about three to five years to remove the massive populations of species. Regular stewardship projects are conducted in all seasons including winter, early spring, late spring, summer, and late summer. This high-intensity program is followed by a low-intensity annual maintenance program for plants we have missed, plants emerging from the seed bank, and occasional plants migrating in from neighboring areas.

Casual clothing, long sleeves and pants, sturdy comfortable walking boots/shoes, gloves are encouraged for these events.

INFO about the area and map <http://www.chapmanforest.org> and www.mattawomanwatershedsociety.org

Contact: Marc Imlay, 301-699-6204 or 301-283-0808. I can be reached at 301-442-5657 on my cell phone on these dates.

DIRECTIONS: First Sunday, meet at main gate of Chapman Forest.

Directions to Chapman Forest, Chapman State Park, Mount Aventine and the Glendening Natural Environment Area. Take the Washington Capital Beltway to Indian Head Highway (MD 210) south toward Indian Head (from VA Exit 2; from MD Exit 3A). At 14 miles, continue through on MD 210 through the traffic light at MD 227 (This crossroads is the center of the community known as Bryans Road). At about 1.1 miles past the light, veer to the right onto Chapmans Landing Road. Follow for 1.6 miles to the gated entrance of Mount Aventine and Chapman State Park.

CARPOOL Info: Meet at Sierra Club Md. Chapter office at 9 a.m.; return 5 p.m. Call Laurel Imlay at 301-277-7111.

DIRECTIONS: Following Saturday, meet at Ruth B. Swann Park- Potomac Branch Library parking lot, 20 miles south of Washington Beltway (I-495) on Rt. 210 (Indian Head Hwy), about a mile and a half south from the traffic light on Rt. 210 in Bryans Road .Give yourself 30 to 40 minutes from the Beltway. **CARPOOL Info:** Meet at Sierra Club Md. Chapter office at 9 a.m.; return 5 p.m. Call Laurel Imlay at 301-277-7111.

Garrett County

Savage River State Forest: Battling Botanical Bullies

Leaders: Ron Boyer & Liz McDowell

Elk Ridge Native Plant Preserve

283 Elk Ridge Lane

Grantsville, MD 21536

301.895.3686

Thursday April 29 and Friday May 7

Bear Pen Wildlands from 8:30 am to 12:30 pm

Adult volunteers are needed to continue control efforts of Japanese spiraea in the Bear Pen Run area of Savage River State Forest. Bear Pen is designated as a Type 1 Wildland and like other natural areas around the

State is threatened by a variety of exotic invasive species. Kerrie Kyde, Invasive Plant Specialist with the Maryland Wildlife & Heritage Service, is providing technical support. Wade Dorsey, Savage River State Forest acting manager, is providing work tools. Mary Ironside, Big Run & New Germany State Park manager, is providing free camping the night before for any out-of-town volunteers. The Savage River Watershed Association is coordinating the project and providing snacks and drinks for volunteers. For more details or to volunteer, email Savage River Watershed Association at SRWAcoordinator@gmail.com or call Ron Boyer, SRWA invasive species removal coordinator, at 301-895-3686.

Harford County

Otter Point Creek Anita C. Leight Estuary Center
Kriste Garman

Date/Times: Invasinators! Ongoing. Contact Registration Info: Please call 410-612-1688 or register through the web, www.otterpointcreek.org.

Saturday, March 21 12:30-2:30

Saturday, April 25 10:30-12:30

Saturday, May 23 1-3 pm

Enjoy pink ladys slippers and native orchids in upland and wooded swamp. Become a part of the volunteer team of invasive plant removers and native plant restorers. Learn why non-native invasive plants are a threat to our ecosystem, how to identify problem plants, and removal and restoration strategies. Wear sturdy shoes, long sleeves, and work gloves for fieldwork in the Reserve each meeting date. Participants receive an "Invasinators" T-shirt after attending 2 work days.

Location: Anita C. Leight Estuary Center, 700 Otter Point Road, Abingdon, MD 21009

Registration Info: Please call 410-612-1688 or register through the web, www.otterpointcreek.org.

Howard County

Middle Patuxent Environmental Area
Conservation Stewardship Project
2010 Schedule

ONE-TIME VOLUNTEERS ARE WELCOME
No Experience Necessary

*We Meet on the 4th Tuesday Morning of the Month
from 9:00 – 11:30 AM. Please Carpool!*

The **Middle Patuxent Environmental Area (MPEA)**, established in 1996, is 1,021 acres in size and contains a diversity of habitat types. There are upland and bottomland hardwood forest, fields, wetlands, ponds, and riparian habitats. The primary components of the MPEA's mission are natural resources management, education, research and recreation.

March 23rd: GARLIC MUSTARD REMOVAL & SEEP AREA EXCURSION

Meet at Trotter Road parking lot

Volunteers help pull Garlic mustard alongside our trails every year. Our goal will be the maintenance of previously cleared areas, plus we'll seek out and eliminate any new or remaining satellite mustard invasions. If time permits we'll visit the spring seep area to remove other invasives too. The seep area was historically rich with American woodcock activity and efforts continue there to restore proper Timberdoodle feeding cover. Restoration of this special area is hindered chiefly by the presence of Multiflora rose. While in the seep, we'll observe and discuss the significant progress volunteers have made in replenishing this habitat.

April 27th: SPRING EPHEMERAL SPREE & GARLIC MUSTARD REMOVAL

Meet at South Wind Circle

We plan this event to coincide with the blooming of numerous Virginia bluebells found in the work zone. Often we're successful and occasionally we aren't; however, many other spring ephemeral plants will be seen, identified and discussed while attendees travel a wooded route to uproot Garlic mustard. Customarily we conclude at the verdant spot where Cricket Creek flows into the Middle Patuxent. Even though we see less mustard each year, still be prepared for a morning of vigorous Garlic mustard removal.

May 25th: ALDER ADDITION & INVASIVE SUBTRACTION

Meet at Trotter Road parking lot

If we've got 'em, we'll plant 'em: Native alders that is. Alders are well suited for survival in the seep area where volunteers have contributed so much work already. Planting additional alder shrubs may take all morning. If not, we will return our focus to non-native, invasive plant species removal. Primarily we may seek out and dig up *Berberis thunbergii* aka Japanese barberry, a recurring nemesis in the environmental area.

June 22nd: MENACING THE MILE-A-MINUTE

Meet at Trotter Road parking lot

Non-native, invasive plants are a real threat to our habitat restoration efforts. Mile-a-minute vine, among several other invasive species, is the worst offender of the trails and meadows in the Woodcock Habitat Management Area. Come out and assist us in removing vines from various places within our meadow areas. Time allowing we'll either have a guest speaker knowledgeable on meadow flowers or we'll visit one of the test sites for biological control of Mile-a-minute vine.

July & August: NO PROGRAM

September 28th: INVASIVE VINE TRIMMING & MONARCH ACTIVITIES

Meet at Trotter Road parking lot

Invasive plants are impacting the native woody plants associated with the wildlife meadows and our early successional habitat maintenance goals. We'll continue our restoration efforts by removing invasive vines from mature native plants and also from the deer shelters protecting younger specimens. Finally, back by popular demand, we'll have a guest to teach about Monarch butterfly natural history and demonstrations of butterfly capture, tagging, & release methods.

October 26th: RIPARIAN BUFFER RETREAT

Meet at South Wind Circle

Hundreds and hundreds of native trees and shrubs have been planted by our volunteers. On this morning we'll return to a previous riparian planting site and work to control any invasive plants which may be affecting the area. Included will be a short discussion of the benefits of riparian buffer zones. Wear comfortable shoes as we'll be walking a little farther than usual.

November 23rd: Barberry Bustin'

Meet at Trotter Road parking lot

We haven't seen the last of the Japanese barberry. It will take several events every year to get the plant back under control. Using the same techniques we practiced back in March we'll keep digging and uprooting these unwelcome intruders of natural areas. Work will occur along trail corridors in the heavily infested areas. Spine-proof gloves are a must!

The Conservation Stewardship Project, a joint program of the Howard County Recreation & Parks and the Howard County Master Gardeners, targets the problem of controlling invasive, exotic species in the Middle Patuxent Environmental Area. Volunteer work dates occur monthly from March through November, skipping July & August. Each date includes an educational component concerning the target invasive species or target work area for the day.

Driving Directions:

Trotter Road Entrance to MPEA -*From U.S. 29 at 32:* Take 32 west to the Great Star Drive exit. Turn right onto Great Star Drive. Then make a right onto Summer Sunrise. Continue to Trotter Road and make a left. Proceed about 1 mile to the parking area on the right just beyond the small traffic circle.

From U.S. 29 at 108: Take 108 west and continue past Centennial Lane. Proceed past Harpers Farm Road to Trotter Road and make a left. Continue to the parking area on the left. If you reach the small traffic circle, you've gone too far.

South Wind Circle Entrance to MPEA -Route 29 to Route 108W towards Clarksville OR Route 32 to Route 108E. Turn onto Trotter Road to South Wind Circle (about 1 mile). Enter the circle and proceed to trailhead on left (opposite Misty Top Path).

For more information contact Master Gardeners: Aylene Gard at (410) 992-9889, Carol Filipczak at cfilipczak@comcast.net, or Jeff Claffy, Assistant Natural Resources Manager, MPEA at (410) 313-6209 or jclaffy@howardcountymd.gov

Jeff Claffy

Assistant Natural Resources Manager

Middle Patuxent Environmental Area

Natural Resources Division, Howard County Dept. of Rec. & Parks

7120 Oakland Mills Road, Columbia, MD 21046

410.313.6209

fax 410.313.3702



Arundel / Prin



ge's County



Fort Meade

Contact Mick Butler, Installation forester, by phone at 301-677-9188 in April for the dates starting in Spring for the Second Saturday of every month at 10 a.m. (time is flexible if enough volunteers are available).

Help remove Japanese stilt grass, English ivy, garlic mustard, tree of heaven, multiflora rose, Japanese honeysuckle, common privet, phragmites, Asiatic tearthumb, etc. Prior to removing the weeds, there will be a short training session on identification, and control techniques of non-native invasive plants. People of all ages, backgrounds and interests are invited to spend a few hours outdoors, hand-pulling some non-native plants while learning about the differences between native and non-native invasive plants and how these invasives adversely impact our natural ecosystem.

Where and When

Fort Meade Army Installation

Directions: Take Route 175 East from the 295 Baltimore Washington Parkway.

Turn Right onto

Reece Road to enter the post, immediately turn left onto Ernie Pyle Street, go approximately 1 mile to Llewellyn Avenue, Turn left on Llewellyn, then turn right onto Chisholm Avenue, turn left on 3rd Street, turn right on Ross Road and go to 2nd building on the right, Environmental Division Office.

Bring hand tools, gloves, lunch and water. Long sleeves and pants recommended.

At least three days prior to the event, contact Mick Butler, Installation forester, by phone at 301-677-9188 or by e-mail,

A list of names should be provided to the forester that will in turn be provided to guard personnel at Reece Road entrance to ensure access on to post.

Patuxent Research Refuge

Christopher Wicker

Wildlife Biologist

Wednesday 04-22-2010, Earth Day event - Weed Warriors kick-off, North Tract Visitor Contact Station, 1:00PM – 3:00PM

Wednesday 05-19-2010, North Tract Visitor Contact Station, 1:00PM – 3:00PM

Wednesday 06-09-2010, North Tract Visitor Contact Station, 9:00AM – 12:00PM

Wednesday 06-16-2010, North Tract Visitor Contact Station, 9:00AM – 12:00PM

Wednesday 07-07-2010, National Wildlife Visitor Center, 9:00AM – 12:00PM

Wednesday 07-21-2010, North Tract Visitor Contact Station, 9:00AM – 12:00PM

Wednesday 08-04-2010, North Tract Visitor Contact Station, 9:00AM – 12:00PM

Patuxent Research Refuge, established by President Franklin D. Roosevelt in 1936, was America's first and only refuge devoted to support wildlife research. Patuxent's mission is "to help protect and conserve the nation's wildlife and habitat through research on critical environmental problems and issues." Its 12,750 acres of forest, meadow, and wetland habitats are managed to promote biological diversity and the protection of native and migratory bird species.

Non-native invasive plants are threatening our wildlife habitat. We need YOU to help stop them. Come out for one of our "Weed Warriors Days" and help us treat garlic mustard, mile-a-minute, Japanese stiltgrass and other non-native plant infestations on the refuge. All ages and abilities are welcome. Do your part to protect Patuxent from alien invaders, and become a Weed Warrior! You will receive a short educational briefing explaining the effects of invasive plants on wildlife and wildlife habitats and how to identify and control these plants. Wear long sleeves and pants and bring gloves. Please register for this event by calling 301-497-5887. Dates for 2010 events are as follows (dates and times subject to change if necessary):

Directions to the North Tract Visitor Contact Station:

From I-295, take the exit for MD-Route 198 towards Fort Meade. Go approximately 1.5 miles until you see Glory Days Auto Salvage on your near right corner and baseball fields on your far right. Turn right between the two onto Bald Eagle Drive. Proceed through the gate and continue about 1/2 mile to the Visitor Contact Station.

Directions to the National Wildlife Visitor Center: The National Wildlife Visitor Center is located off of Powder Mill Road between MD Route 197 and the Baltimore/Washington Parkway, south of Laurel.

For additional information, call 301-497-5763 or visit <http://patuxent.fws.gov>.

**Christopher Wicker
Wildlife Biologist
USFWS, Patuxent Research Refuge
12100 Beech Forest Road, Room 138
Laurel, MD 20708
E-mail: Christopher.Wicker@fws.gov
Fax: (301) 497-5515
Patuxent Research Refuge**

KENT COUNTY

Eastern Neck Wildlife Refuge

Welcome to Eastern Neck National Wildlife Refuge, located at the confluence of the Chester River and the Chesapeake Bay on Maryland's Eastern Shore. This 2,285-acre island refuge is a major feeding and resting place for migrating and wintering waterfowl. More than 100,000 ducks, geese and swans seek sanctuary here each year, as do migrating and breeding songbirds and shorebirds, and bald eagles that thrive here year-round. Interpretive programs and hikes are offered at this wetland site known for its rare plant life. A variety of carnivorous plants, as well as rare and threat

Wineberries with garlic mustard: A new type of exotic fruit salad? Not quite. These are two invasive plant species that the U.S. Fish and Wildlife Service would like help removing from Eastern Neck Wildlife Refuge (1730 Eastern Neck Road, Rock Hall, MD). Garlic mustard is a newly arrived invasive species, and is a management priority. Wineberry is a raspberry-like plant that begins to ripen with fruit between June and July. Garlic mustard is pulled by hand, but a 4-pronged spading fork works best on wineberry. High boots (for ticks) are recommended, along with a DEET-based bug repellent, a hat and gloves. Rachel is always looking for volunteers to help pull weeds. Contact 410-639-2108 for details about when and where.

Montgomery County

Brookside Gardens

Weed Warriors are needed for the forested areas surrounding the gardens. You will be given directions so that you may work independently, weekends or weekdays, on your own schedule. Contact: Stacy Parsons 301-962-1417 or stacy.parsons@mncppc-mc.org . Websites: www.BrooksideGardens.org and/or www.MC-MNCPPC.org/environment/weed_warriors/intro.shtm

Montgomery County Parks

Montgomery County Parks

Help Us by Becoming a Weed Warrior!

We welcome citizen volunteers for help in removing non-native invasive plant species from M-NCPPC parks in Montgomery County, Maryland. Become a Certified Weed Warrior by completing a one-hour online course and a two-hour field training session with the forest ecologist for Montgomery Parks, Carole Bergmann. You'll learn identification, removal techniques, and control strategies

for the most harmful invasive plants species. Once trained, Certified Weed Warriors can then work at their own pace and choose a schedule that best suits them. Opportunities to work with a group on invasive removal are also offered several times a year. A newer program, Special Project Weed Warriors, enables various community groups (e.g., from a school, workplace, church or synagogue, or community association) to learn weed ID and removal on the spot and then spend a couple of hours tackling invasive vines, shrubs, and herbaceous plants on county parkland. Learn more about both programs at www.weedwarrior.org or call Paul Carlson at 301-942-4709 (Certified) or Lynette Scaffidi at 301-949-0223 (Special Projects).

We are doing a Garlic Mustard Challenge this year in the Montgomery County Parks in MD. It will be held Earth Day where there will be over 30 parks participating in the event with prizes for the most GM pulled and participation prizes for everyone. Here's the link to the event:

http://www.mcparkandplanning.org/parks/PPSD/Natural_Resources_Stewardship/Veg_Management/weed_contest_2008.shtm

Lynette Scaffidi

The Potomac Gorge

**Invasive Plant Control Workdays in The Potomac Gorge. Ongoing
The Nature Conservancy**

Help protect native plant biodiversity near DC! in partnership with the National Park Service, we will continue all season with invasive plant control workdays in the Potomac Gorge, a 15-mile stretch of river valley between Great Falls and Georgetown with over 200 rare plants and 5 globally rare plant communities. Volunteers are welcome to sign up for a variety of workdays, where we cut or pull some of the most problematic weeds, often in scenic areas. We will hold Weed Warrior training sessions, where volunteers learn 13 non-native plant species, adopt an area and work independently in the National Parks in the Potomac Gorge.

We have some upcoming volunteer workdays in the Potomac Gorge--please come join us! There will be a slew of fun opportunities in the spring! Please let me know if you are interested--and see full details at: <http://www.nature.org/wherewework/northamerica/states/maryland/events/>

For more information or to sign up, go to: www.nature.org/maryland for a list of workdays, or contact Mary below if you would like to sign up a school or organizational group for a workday, or be added to our email list: PotomacGorgeVol@tnc.org
(301) 897-8570 x210

Mary Travaglini
Potomac Gorge Habitat Restoration Manager

The Nature Conservancy of MD/DC
5410 Grosvenor Lane, Suite 100
Bethesda, MD 20814
(301) 897-8570 x235
fax: (301) 897-0858

**Woodend Nature Sanctuary,
Audubon Naturalist Society, Chevy Chase, MD**

Liz Jones, Volunteer Coordinator
Invasive removal scheduled monthly on Saturday mornings.

Date: March 13, 9:30 - 12:00.

Contact volunteer Coordinator Liz Jones volunteer@AudubonNaturalist.org
for details and current schedule.

Woodend, the ANS' original sanctuary, is a 40-acre oasis in the middle of Chevy Chase, MD. Bordering Rock creek Park, the sanctuary contains mature woods and meadows, a pond, and an intermittent stream that provide habitat for many birds, insects, deer, rabbits, and foxes.

The Audubon Naturalist Society needs your help to remove invasive non-native plants from its Woodend Sanctuary in Chevy Chase, MD! Join us for group work sessions where training will be provided. Trained volunteers may also be authorized to work independently.

Contact Liz Jones: volunteer@audubonnaturalist.org or 301-652-9188 x 30 for more information or to sign up.

Liz Jones
Volunteer Coordinator
Audubon Naturalist Society
8940 Jones Mill Road
Chevy Chase, MD 20815
301 652-9188 x30

**Bird Walk and Invasive Plant Removal on the Blue Mash Nature Trail,
Laytonsville, MD**

**Leader/Sponsors: Mimi Abdu, Montgomery County Sierra Club,
Montgomery Bird Club, Montgomery County Department of Environmental
Protection**

**Date and Time: Fourth Sunday of each month, 7:30am-9:00am (bird walk,
March-May), 9am-11 am (invasive removal, March-November)**

Description: Join us for a beginner's bird walk (March-May) followed by invasive plant removal. Bird walks resume in September. The diverse habitats surrounding the closed Oaks Landfill attract birds and other wildlife. Bird diversity has dropped off in recent years due to invasive non-native plants. We are partnering with the Department of Environmental Protection and the Montgomery County Bird Club to observe the relationship between bird diversity and habitat, remove invasive plants, and return the area into a birding hot spot.

Bring: Tools are limited so please bring clippers, saws, and loppers. Long sleeves, pants, comfortable walking shoes or boots, hat, water, gloves, and binoculars are recommended.

Directions: Meet at the Zion Road park entrance between Brookeville and Riggs Roads. Go north on Georgia Avenue through Olney and Brookeville. Make a left on Brookeville Road. Make a right on Zion Road. The park entrance is on the left 1/2 mile from Brookeville Road at 20500 Zion Road. Trail map at

http://www.montgomeryparks.org/PPSD/ParkTrails/trails_MAPS/blue_mash_shtm.

Map and more information at

<http://maryland.sierraclub.org/montgomery/calendar.html>.

Contact: RSVP Mimi Abdu at mimi.abdu@maryland.sierraclub.org or 301-919-6060.

>

Invasive Plant Removal in Rock Creek Park, Chevy Chase, MD
Leader/Sponsors: Jeremy Arling, Montgomery County Sierra Club and Montgomery County Parks

Date and Time: First Saturday of each month
(April-October), 10am-12pm

Description: The Montgomery County Parks and Planning Commission have plans to put in a wildflower meadow and reforest a 50 foot stream side buffer at this locality. Before they can do this, they need volunteers to remove resprouting stumps and seedlings.

Directions: From the Beltway: Take the Connecticut Ave exit South towards D.C. Turn left on East West Highway in about 1 mile. Turn right on Beech Drive. We will meet at the parking lot along side the soccer field at the intersection of Beech Drive and East West Highway. Map and more information at <http://maryland.sierraclub.org/montgomery/calendar.html>.

Bring: Tools are limited so please bring clippers, saws, and loppers. Long sleeves, pants, gloves, hat, comfortable walking shoes or boots, insect repellent, sunscreen, and water are recommended.

Contact: RSVP Jeremy Arling at

jeremy.arling@maryland.sierraclub.org or 240-398-3635.

**Invasive Plant Removal on the Underground Railroad Experience Trail,
Sandy Spring, MD**

**Leader/Sponsors: Jeremy Arling, Montgomery County Sierra Club and
Montgomery County Parks**

Date and Time: Second Saturday of each month, 10am-12pm

Description: We are partnering with Montgomery County Parks to remove non-native invasive plant species, restore the native plant communities, and create a living history museum where people can learn the fascinating stories of those who escaped slavery and the people who helped.

Directions: Take Rt. 28E (Norbeck Road) across Georgia Ave. to the intersection with Layhill Road. Go left on Layhill and proceed to the intersection of Norwood and Ednor Roads. Go left on Norwood. Take the first driveway on the right to Woodlawn at 16501 Norwood Road. We will meet at the parking lot near the picnic tables. For a trail map and more information, go to http://www.montgomeryparks.org/PPSD/ParkTrails/trails_MAPS/Rural_legacy.shtm. Map and more information at <http://maryland.sierraclub.org/montgomery/calendar.html>.

Bring: Tools are limited so please bring clippers, saws, and loppers. Long sleeves, pants, gloves, comfortable walking shoes or boots, hat, and water are recommended.

Contact: RSVP Jeremy Arling at jeremy.arling@maryland.sierraclub.org or 240-398-3635.

**Steven Lonker
2600 Camelback Lane, #3
Silver Spring, MD 20906-5793
H, Mobile: 301-351-6985
W: 703-292-8262
steven.lonker@maryland.sierraclub.org**

**Rock Creek National Park
Friends of Rock Creek's Environment
Beth Mullin, Executive Director**

Dates: Ongoing. Check web site for new events

**Rock Creek News
February 2010**

Friends of Rock Creek's Environment is off to a great new year!

Volunteers came out in force on warm, sunny Martin Luther King Day. In the morning, 100 people cut and sawed invasive English ivy from trees along Normanstone Creek, a tributary of Rock Creek flowing near Massachusetts Avenue in DC. In the afternoon, another group of more than 30 people hauled trash from along Turkey Branch, a tributary of Rock Creek in the Aspen Hill neighborhood of Montgomery County.

You too can take steps to help protect Rock Creek. We are now gearing up for the Rock Creek EXTREME Cleanup, where we expect over 50 trash cleanups to span the length of Rock Creek. Mark your calendars for April 10 and keep an eye on the FORCE website, friendsofrockcreek.org for a cleanup site near you.

Prince George's County

Hard Bargain Farm Environmental Center, Accokeek

Invasive Plant Removal at Hard Bargain Farm Environmental Center, Accokeek, MD

Leader: Karen Jensen Miles

The hike on trails through the diverse ecosystems of the Accokeek Creek and Potomac River watersheds focuses on plants and animals that live there, the interdependence of organisms in food webs, natural cycles, and each person's connection to the environment.

Volunteers needed! Call 301-292-5665 or e-mail kmiles@fergusonfoundation.org for

more information and schedule April 17- Working with Earth Day Network

**Karen Jensen Miles
Program Director
301.292.5665 / 301.292.1070 (fax)
kmiles@fergusonfoundation.org**

Greenbelt

**Greenbelt Homes Inc Housing Cooperative, Greenbelt
Third Wednesday of each month**

The Greenbelt Homes Inc. (GHI) housing cooperative in Old Greenbelt has ~100 acres of stewardship forest and other wooded parcels. The Woodlands Committee is actively involved with urban forestry management. Regular work sessions and educational events are scheduled the third Wednesday of every Month. Typical outings include removal/eradication of non-native invasive plant species, tree plantings, bird counts, native landscaping seminars and guided hikes. For more information on GHI Woodlands Committee activities, contact 301-474-4161 or visit <http://www.ghi.coop/Woodlands/index.htm>.

**Matt Berres
Manager, Maintenance Operations
Greenbelt Homes Inc.
301-474-4161 x132
mberres@ghi.coop**

Greenbelt National Park, Greenbelt

Invasive Plant Removal first Saturday of each month 11a.m - 3 p.m. Located just 12 miles from Washington D.C., Greenbelt Park is a beloved retreat from the city and an important refuge for native plants and animals. Come join us in defending Greenbelt Park from encroachment by alien invasive plant growth. Volunteers will be hand pulling harmful non-native plants such as Japanese honeysuckle, beefsteak mint, mile-a-minute weed and garlic mustard. People of all ages, backgrounds and interests are invited to spend a fun day outdoors while learning about the differences between native and non-native plants and helping to preserve the health and native wildlife of this local natural area.

Bring: lunch, drink, work gloves if you have them, and clothing appropriate for the weather.

Directions: The park entrance is at 6565 Greenbelt Road (MD Rt 193).

From the Beltway, take Kenilworth Avenue south about 1/4 mile to Greenbelt Rd. Kenilworth goes under Greenbelt Rd; stay to the right so you can take Greenbelt Rd East (a left to go over Kenilworth).

From US Rt 1, take Greenbelt Rd east past Beltway Plaza shopping center and Kenilworth Ave.

The park entrance is only a few hundred yards past Kenilworth on the right. Follow the signs to the Sweetgum picnic area.

Questions: Contact Tom Crone at tomnjan@erols.com or 301-864-1959, or visit www.nps.gov/gree or call 301-344-3944.

Belt Woods, Bowie – Ongoing Saturday, Sunday, and occasional mid-week invasive species workgroups. Times and dates vary based on available team leader. Please call or email for schedule. We will be removing creeping euonymous, Japanese honeysuckle, winged burning bush, multiflora rose, oriental bittersweet, Japanese Stiltgrass, Garlic Mustard, etc. from various parts of the property. Tools and gloves provided, but feel free to bring your own favorite tool or pair of gloves. Email to be added to the contact list at pamelakcooper@verizon.net or call (301) 390-0797.

Lower Beaverdam Creek, Cheverly **Friends of Lower Beaverdam Creek**

last-Saturday-of-the-month March-June 2010 9am to noon.

Woodworth Park in Cheverly, MD. This 15-acre wooded buffer wedged between a residential neighborhood and Route 50 is slowly returning to its natural state thanks to The Friends of Lower Beaver Dam Creek. The group landscaped steps into a small hill that leads to an inviting trail the volunteers blazed along a shallow winding creek. The creek, which roughly divides the park in two, eventually feeds a tributary of the Anacostia River. The reclaimed land has a peaceful resonance. Trees stand out. Space, depth and light are abundant. Smaller trees such as sassafras, hickory, hornbeam and a dogwood—discovered on a hillside after the thickets were cleared—were labeled. The forest returned to its rightful winter hues—brown, black and gray.

Help Most Polluted Stream in Anacostia Watershed

Friends of Lower Beaverdam Creek seeks volunteers for invasive-plant removal and native planting activity. Meet at Woodworth Park on Wayne Place in Cheverly, Md.

To join Friends of LBC or for more info about the park, contact Dan or Cathy Smith at 301-386-4394, Gabe Horchler ghor@loc.gov or Elaine Friebele at 301-341-5722 for confirmation of date and occasional change in location to Euclid Park and Magruder Springs in Cheverly.

Tools are provided, but wear work gloves and sturdy shoes.

Directions:

Take 202 East under the BW parkway. Go one block and turn right on Cheverly. Go one mile and turn left on Forest Road. Go two blocks passing church on left and turn right on Parkway. Go 2 blocks and turn left on Wayne for one block. We meet there at the park by the small playground.

Suitland Bog Invasive Plant Removal Days

Leader: M-NCPPC Park Ranger Chris Garrett

Dates: Ongoing. Contact John Dillon or Chris Garrett for dates and times as they are organized

Workday description: Manual removal of honeysuckle and multiflora rose using shovels, pruners and perseverance. Come and help preserve this unique rare magnolia bog habitat. Meet in the parking lot.

Directions: From the Capital Beltway (I-495), take Exit 7A (Branch Avenue), toward Waldorf. Take Route 5 south. Take the Allentown Road exit. Make a left onto Allentown Road. Stay on Allentown Road through five lights. Turn left onto Suitland Road at the 6th light. Follow Suitland Road until it passes under Suitland Parkway. The entrance to the Suitland Bog is to the right.

Bring: water, work boots, durable clothes, long sleeves, gloves, pruners, and shovels.

Note: Light refreshments will be provided. There is some poison ivy at work site.

M-NCPPC Park Ranger Office

301-627-7755

Indian Creek Trail @ Lake Artemesia, Berwyn Hgts

Title: Garlic Mustard Pull-off

Leader: M-NCPPC Park Rangers Chris Garrett and John Dillon

Dates: Ongoing. Contact John Dillon or Chris Garrett for dates and times as they are organized

Lake Artemesia/National Area Park, Built around a 38-acre lake, this beautiful park includes an aquatic garden, handicapped-accessible fishing pier and over two miles of hiker-biker trails. Because vehicles are not permitted on park grounds, visitors should enter the park via trails at the 5200 block of Calvert Road in College Park, or Osage Street and Swathmore Court in Berwyn Heights (parking lot within easy walking distance).

Workday description: Teams compete in removal of the non-native invasive weed

Garlic Mustard. Prizes given to winning team for largest amount pulled in a given area and time. Meet in the Lake Artemesia parking lot along Berwyn Road.

Location: Indian Creek Trail @ Lake Artemesia, Berwyn Hgts, Prince George's County

Directions: Location/Directions - The lake is located on Berwyn Road in College Park.

From the south, the Capital Beltway (I-495), take Exit 23 (Kenilworth Avenue) toward Bladensburg. Make a right onto Route 193 (Greenbelt Road). Make a right onto Branchville Road. (This road turns into 55th Avenue). The parking lot is on the left at the Berwyn Road intersection.

From the north, the Capital Beltway (I-495), take Exit 25 (Route 1) toward College Park. Make a left onto Route 193 (Greenbelt Road), then a left onto Branchville Road. (This road turns into 55th Avenue). The parking lot is on the left at the Berwyn Road intersection.

Bring: water, work boots, durable clothes, long sleeves, gloves,

Note: Light refreshments will be provided. There is some poison ivy at work site.

Contact: M-NCPPC Park Ranger Chris Garrett or John Dillon

M-NCPPC Park Ranger Office

301-627-7755

Watkins Regional Park

Title: Weed Warrior Work Day

Leader: M-NCPPC Park Ranger John Dillon

Dates: Ongoing. Contact John Dillon or Chris Garrett for dates and times as they are organized

Watkins Regional Park covers more than 850 acres, and offers all kinds of outdoor adventures. The park is also home to the Watkins Nature Center, the Chesapeake Carousel, Old Maryland Farm, the Watkins Regional Park miniature train, and the Watkins Miniature Golf Course. Recreational amenities include 34 campsites at the park campgrounds, picnic areas with shelters, playgrounds, comfort stations, a paved, 1.7 mile circuitous hiker/biker trail, and several miles of trails through deciduous forest for hiking and biking.

Workday Description: Manual removal of the non-native invasive weed Garlic Mustard. Location: Watkins Nature Center @ Watkins Regional Park, Prince George's County. Meet at Watkins Nature Center parking lot.

Directions: Located in Upper Marlboro, Maryland, in Watkins Regional Park, one mile west of the Six Flags America amusement park.

From the Capital Beltway (I-495), take Exit 15A (Central Avenue) east. Continue for approximately three miles. Turn right onto Watkins Park Drive (Route 193) and follow the park signs to the facility.

From Route 301, turn onto Central Avenue (Route 214) west. Continue for approximately three miles (past Six Flags America). Turn left onto Watkins Park Drive and follow to the park entrance on the right.

Bring: water, work boots, durable clothes, long sleeves and gloves.

Note: Light refreshments will be provided. There is some poison ivy at work site.

Contact: M-NCPPC John Dillon or Chris Garrett

M-NCPPC Park Ranger Office

301-627-7755

Anacostia Watershed Society Assists Weed Warriors.

Maryland Native Plant Society, Sierra Club, and Anacostia Watershed Society co-sponsor the monthly projects Little Paint Branch Park (150 acres), Cherry Hill Road Community Park (15 acres) in Beltsville and Magruder Park in Hyattsville MD (15 acres) with the MNCPPC, DNR, City of Hyattsville, and Anacostia Watershed Society

Little Paint Branch Park and Cherry Hill Road Community Park, Beltsville. Last Saturday of the month from 1100-1500.

Native plants at Little Paint Branch Park as of April 10, 2006, identified by Joe Metzger include:

**Jack in the Pulpit, *Arisaema triphyllum*
White Wood Aster, *Aster divaricatus*
Spring Beauty, *Claytonia virginica*
Trout Lilly, *Erythronium americanum*
Strawberry Bush, *Euonymus Americana*
American Holly, *Ilex opaca*
Spotted Touch-me-not, Jewel Weed, *Impatiens capensis*
Eastern Grasswort, *Lilaeopsis chinensis***

**Woodrush, *Lusula multiflora*
Flat Tree Club Moss, *Lycopodium obscurum*
Partridge-berry, *Mitchella repens*
Cinnamon Fern, *Osmunda cinnamomea*
Dwarf Ginseng, *Panax trifolius*
Virginia Knotweed, *Polygonum virginianum*
Cinque-foil, *Potentilla sp.***

**Cursed Crowfoot, Buttercup, *Ranunculus sceleratus*
Dewberry, *Rubus sp.*
Black Raspberry, *Rubus occidentalis*
Elderberry, *Sambucus Canadensis*
Solomon's Seal, *Polygonatum biflorum***

**Goldenrod, Solidago sp.
Skunk Cabbage, Symplocarpus foetidus
Meadow-Rue, Thalictrum sp.
New York Fern, Thelypteris noveboracensis
Crane-fly Orchid, Tipularia discolor
Low Blueberry, Vaccinium vacillans
Possum-haw, Viburnum nudum
Common Blue Violet, Viola papilionacea
Netted Chain Fern, Woodwardia areolata**

Meet at the Beltsville Community Center parking lot. There are full indoor toilet facilities and a large seating area for lunch. We will continue the wonderful progress accomplished the last three years by the Americorps workers, General Electric Volunteers, Robert Goddard French Immersion and Montessori Elementary School, Washington Quaker Work Camps, and World Bank volunteers at Little Paint Branch Community Park.

Our day will include natural history and special features of the park, methods and reasons for the project to control the spread of invasives. Native flowers and other plants will be identified as we work to rescue them. There will be a sign-in and safety orientation with handouts. Gloves and tools are provided. Our objective is to remove the invasives to allow natives to grow back.

DIRECTIONS:

Take U.S. 1 north from the beltway. Go about 1 mile, passing the National Agricultural Research Center, and turn left at the light on Montgomery Rd. Go 3 blocks and turn left on Sellman Road. Go about 5 blocks and turn right into Little Paint Branch Park at the bottom of the hill. Contact Marc Imlay, 301-283-0808 marc@anacostiaws.org

**Magruder Park, Hyattsville
Friends of Magruder Woods
Third Saturday, 9 am to 1 pm.**

Native plants included Aster, Blackberry, Pokeberry, Tulip Poplar, Sweetgum, Sycamore, Poison Ivy, Skunk Cabbage, American Grape, American Beech, and Silver Maple in the woodlands and forested swamp

Meet at the Magruder Park parking lot. Take Eastwest Highway (410) east almost to Route 1 in College Park. Turn right on Queens Chapel Road about a mile before Route 1. Go south about a mile and turn left on Hamilton. Pass the Safeway on the right, then pass 38th street, go about one block and turn right into the park. Magruder Park is easily accessible

from the West Hyattsville Metro stop on the Green Line. Approximately a 10 block walk to Magruder Park. Contact Colleen Aistis 301 779-0245.

SOME BACKGROUND INFORMATION ON THE PROJECT:

Several of the worst invasive species in the Mid-Atlantic region, including English ivy, Asiatic bittersweet, garlic mustard, bush honeysuckle and porcelain berry, are in the early stages of invasion in this park. Japanese stiltgrass covers about 5% of the park. Research indicates that Japanese stiltgrass is a major contributor of nitrogen pollution in the Chesapeake Bay, and reduces by half the ability of any land it dominates to hold water and release it slowly. Non-native invasive plant removal will reach maintenance phase following a major work effort at each site in the Mid-Atlantic region and around the world for about three to five years to remove the massive populations of species. Regular stewardship projects are conducted in all seasons including winter, early spring, late spring, summer, and late summer.

This high-intensity program is followed by a low-intensity annual maintenance program for plants we have missed, plants emerging from the seed bank, and occasional plants migrating in from neighboring areas.

The project supporters are now removing English ivy, wineberry, periwinkle, ground ivy, Japanese pachysandra, bush honeysuckle, and multiflora rose to rescue the incredible diversity of native plants and animals at this particular park. Unlike most parks in the area, the 150-acre Little Paint Branch Park is in the early stages of invasion and is essentially the native plant nursery for the Paint Branch itself.

Ongoing. Marc Imlay, PhD Conservation biologist, Anacostia Watershed Society, Vice president of the Maryland Native Plant Society, Chair of the Biodiversity and Habitat Stewardship Committee for the Maryland Chapter of the Sierra Club (301-442-5657, 301-283-0808) for more information

St. Mary's County

See Hellen Creek Preserve under Calvert County